

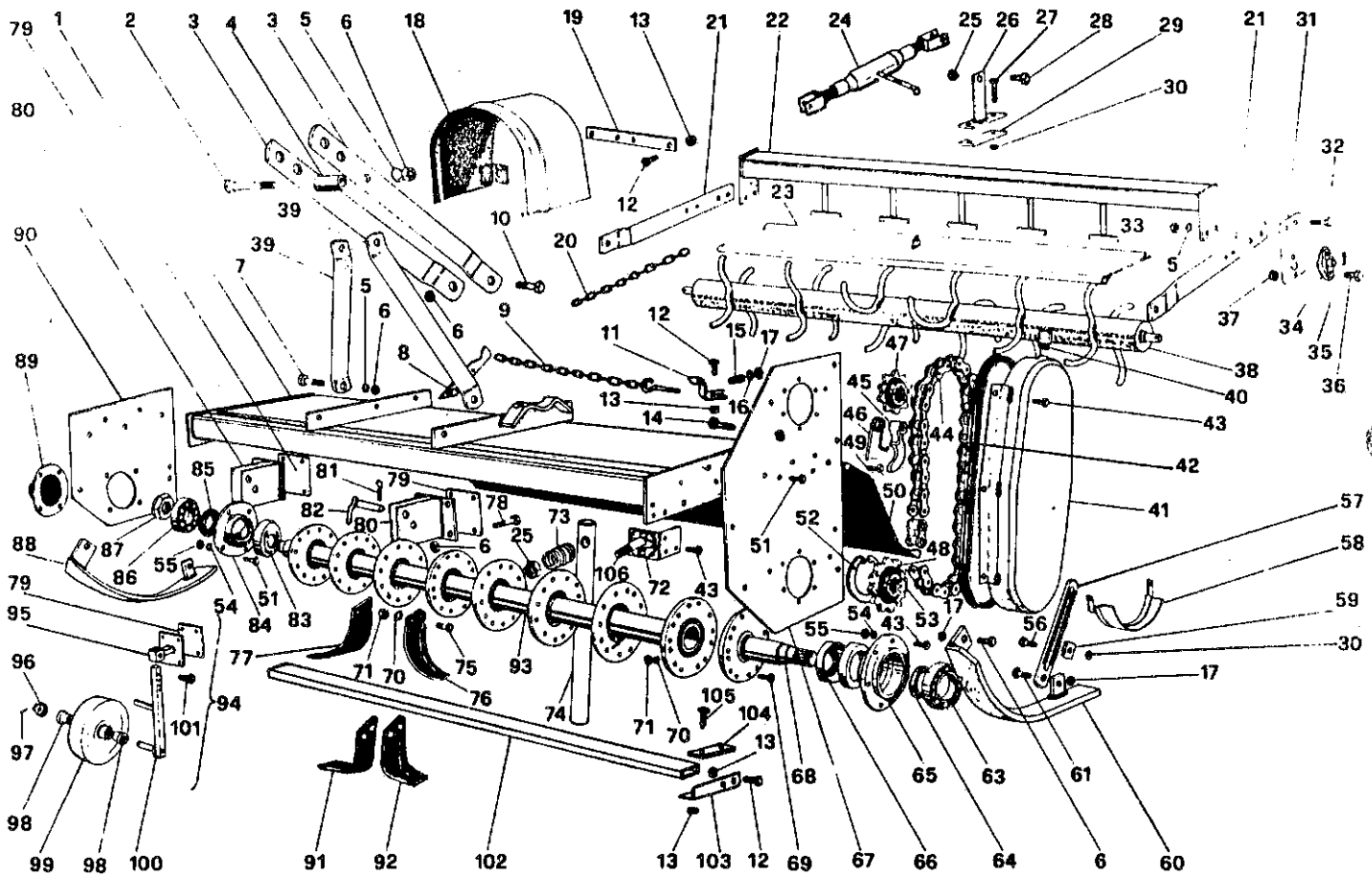
11-3XX-412



PARTS
ILLUSTRATION
MODEL NO.

ROTARY TILLER
MAIN FRAME
11-3XX-412

GR11
SR3
CAT. 56





**PARTS
LIST
MODEL NO.**

**ROTARY TILLER
MAIN FRAME
11-3XX-412**

**GR11
SR3
CAT. 56**

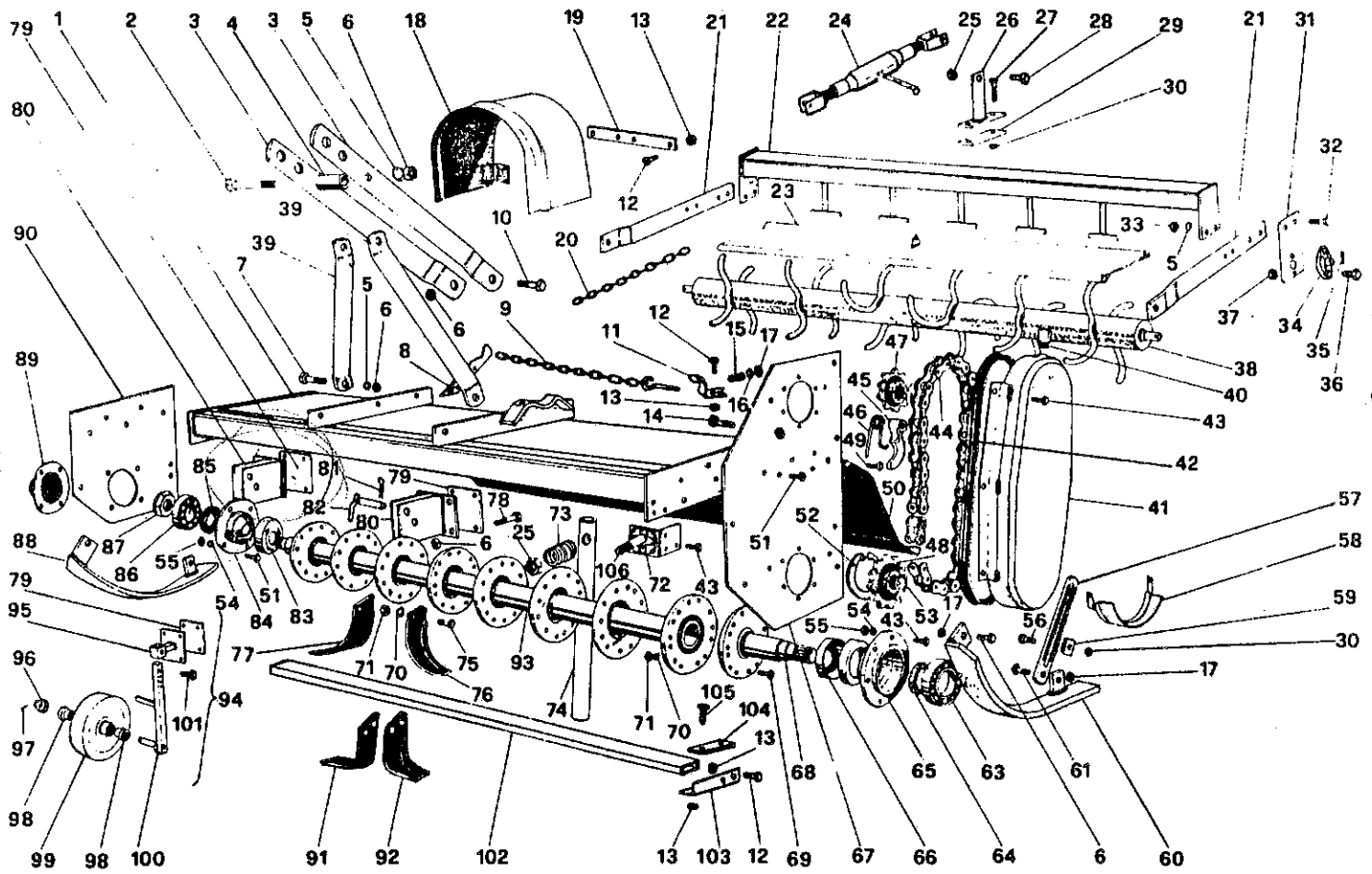
ITEM	PART #	DESCRIPTION	NO.
1	003 8002	FRAME-MAIN WELDMENT-358	1
	013 8002	FRAME-MAIN WELDMENT-366	1
	023 8002	FRAME-MAIN WELDMENT-374	1
	033 8002	FRAME-MAIN WELDMENT-382	1
	009 0226	BOLT M14 X 110	1
2	009 0226	TOP HITCH ARM	1
3	003 7365	SPACER	2
4	000 1254	WASHER M14 LOCK	1
5	000 1020	NUT M14	16
6	000 1019	BOLT M14 X 45	12
7	000 1018	CHAIN HITCH-UPPER	2
8	003 8375	CHAIN COMPLETE	1
9	002 1301	BOLT M14 X 60	1
10	003 0277	CHAIN HITCH-LOWER	1
11	003 7392	BOLT M10 X 25	1
12	003 3176	NUT M10	8
13	000 1279	BOLT M14 X 60	12
14	000 1102	SPRING	2
15	001 3341	WASHER M12	1
16	000 2265	NUT-SELF LOCKING M12	1
17	001 3345	PROTECTIVE COVER	5
18	003 4355	GUARD SUPPORT	1
19	003 8605	CHAIN	1
20	003 7591	ROLLER ARM	2
21	003 7547	ROLLER SCRAPPER-358	1
22	003 7531	ROLLER SCRAPPER-366	1
	013 7531	ROLLER SCRAPPER-374	1
	023 7531	ROLLER SCRAPPER-382	1
	033 7531	SAFETY SHIELD-358	1
	003 7581	SAFETY SHIELD-366	1
23	013 7581	SAFETY SHIELD-374	1
	023 7581	SAFETY SHIELD-382	1
	033 7581	TURNBUCKLE	1
24	003 8773	NUT M14	1
25	003 0358	TURNBUCKLE-HITCH	2
26	003 8781	BOLT M12 X 100	1
27	003 4286	BOLT M14 X 50	2
28	002 9317	PLATE	2
29	003 8785	NUT M12	1
30	000 3038	PLATE SUPPORT PLATE	4
31	003 7517	BOLT M14 X 45	2
32	003 7349	NUT M14	4
33	000 1177	SUPPORT BEARING FYTB 30	4
34	003 7514	ROLL PIN M8 X 40	2
35	002 9247	BOLT M10 X 35	2
36	009 1281	NUT M10	4
37	003 0156	TOOTHED ROLLER-358	1
38	003 7505	TOOTHED ROLLER-366	1
	013 7505	TOOTHED ROLLER-372	1
	023 7505	TOOTHED ROLLER-384	1
	033 7505	TOP HITCH SUPPORT	1
39	003 8312		



PARTS
ILLUSTRATION
MODEL NO.

ROTARY TILLER
MAIN FRAME
11-3XX-412

GR11
SR3
CAT. 56





PARTS
LIST
MODEL NO.

ROTARY TILLER
MAIN FRAME
11-3XX-412

GR11
SR3
CAT. 56
*CAT. 40

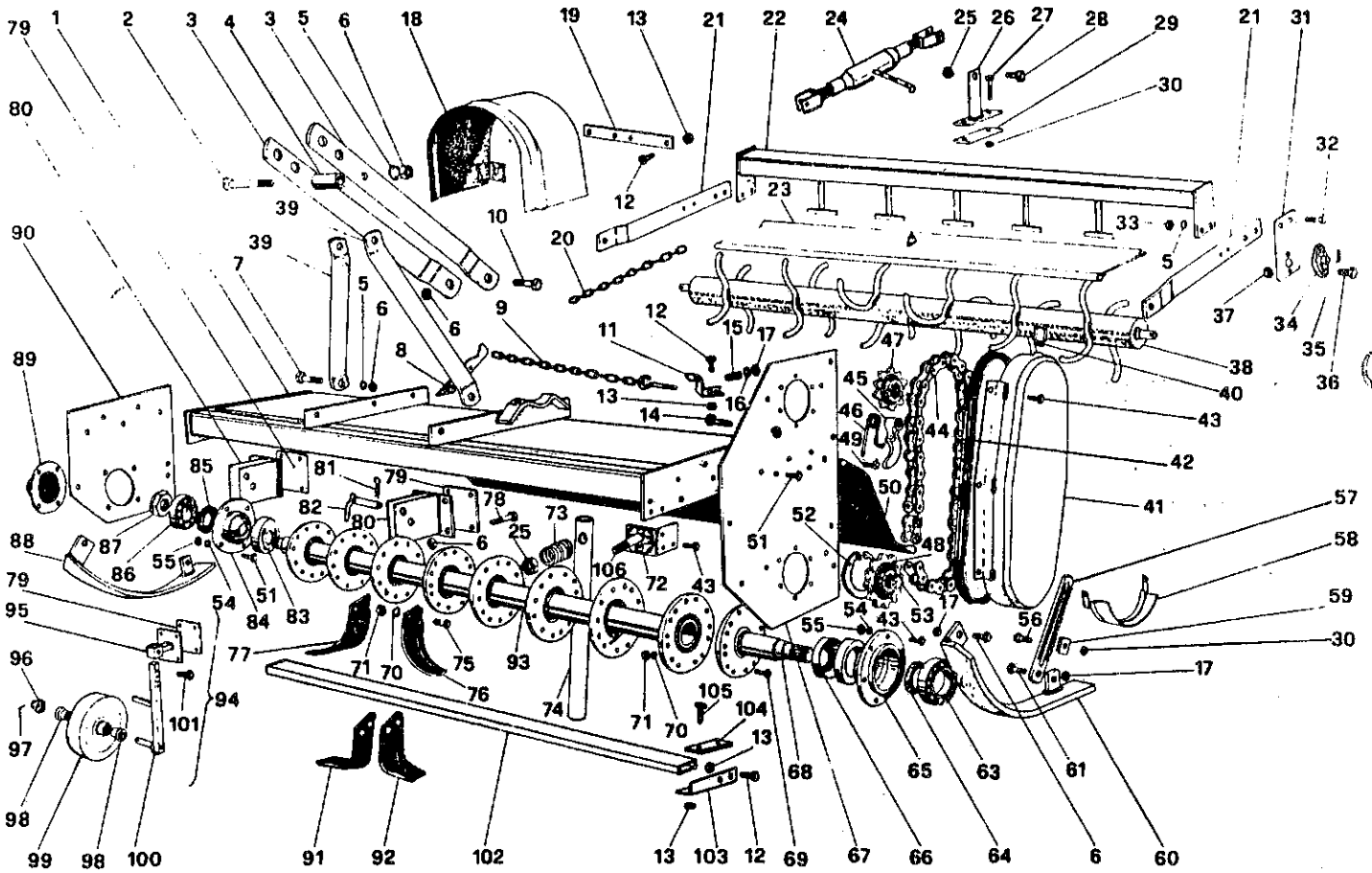
ITEM	PART #		DESCRIPTION	NO.
40	000 1107		BREATHER CAP	1
41	003 7031		CHAIN CASE	1
42	003 7035		GASKET	1
43	000 1008		BOLT M10 X 30	1
44	000 1120		CHAIN	14
45	000 1115		CHAIN TENSIONER	1
46	003 7184		CHAIN TENSIONER SPRING	1
47	000 1112		SPROCKET Z11	1
	000 1111		SPROCKET Z12	1
48	003 7166		SPROCKET Z15	1
	000 1110		SPROCKET Z14	1
49	003 7386		BOLT M18 X 80	2
50	023 7383		REAR SHIELD-358	1
	033 7383		REAR SHIELD-366	1
	043 7383		REAR SHIELD-374	1
	053 7383		REAR SHIELD-382	1
51	000 1241		BOLT M10 X 25	16
52	000 1087		SNAP RING-IN. M100	1
53	000 1114		SNAP RING-EX. M42	1
54	000 1011		WASHER M10	27
55	000 1010		NUT M10	27
56	000 1105		BOLT M12 X 55	2
57	003 7054		SERRATED ADJ. ARM	2
58	003 7043		CHAIN PAN PROTECTION	1
59	003 7057		LOCKING PLATE	2
60	023 7051		SKID LEFT	1
61	000 8153		BOLT M12 X 40	2
62	000 7255		BOLT M12 X 35	2
63	000 1085		BEARING 6309	1
64	003 7156		OIL SEAL 52.80.10	1
65	003 7145		FLANGE-LOWER LEFT	1
66	003 7128		DIRT SHIELD LEFT	1
67	003 7023		LEFT SIDE PANEL	1
68	003 7125		FLANGED PIVOT LEFT	1
69	000 7087	007-7055	BOLT M12 X 45	8
70	000 1077		WASHER M12	—
71	000 1075		NUT M12	—
72	003 7452		STAND HITCH	1
73	000 1176		SPRING FOR STAND	1
74	003 7444		STAND	1
75	000 1073		BOLT M12 X 35	—
76	000 1071S		*C-KNIFE LEFT (STANDARD)	—
77	000 1071D		*C-KNIFE RIGHT (STANDARD)	—
78	003 0285		BOLT M14 X 100	8
79	003 8331		PLATE	4
80	003 8335		SAFETY HITCH BLOCK	2
81	009 1507		COTTER PIN	2
82	003 8346		PIN HITCH	2
83	003 7085		DIRT SHIELD RIGHT	1
84	003 0088		BEARING COVER-INNER	1



PARTS
ILLUSTRATION
MODEL NO.

ROTARY TILLER
MAIN FRAME
11-3XX-412

GR11
SR3
CAT. 56





**PARTS
LIST
MODEL NO.**

**ROTARY TILLER
MAIN FRAME
11-3XX-412**

**GR11
SR3
CAT. 56
*CAT. 40**

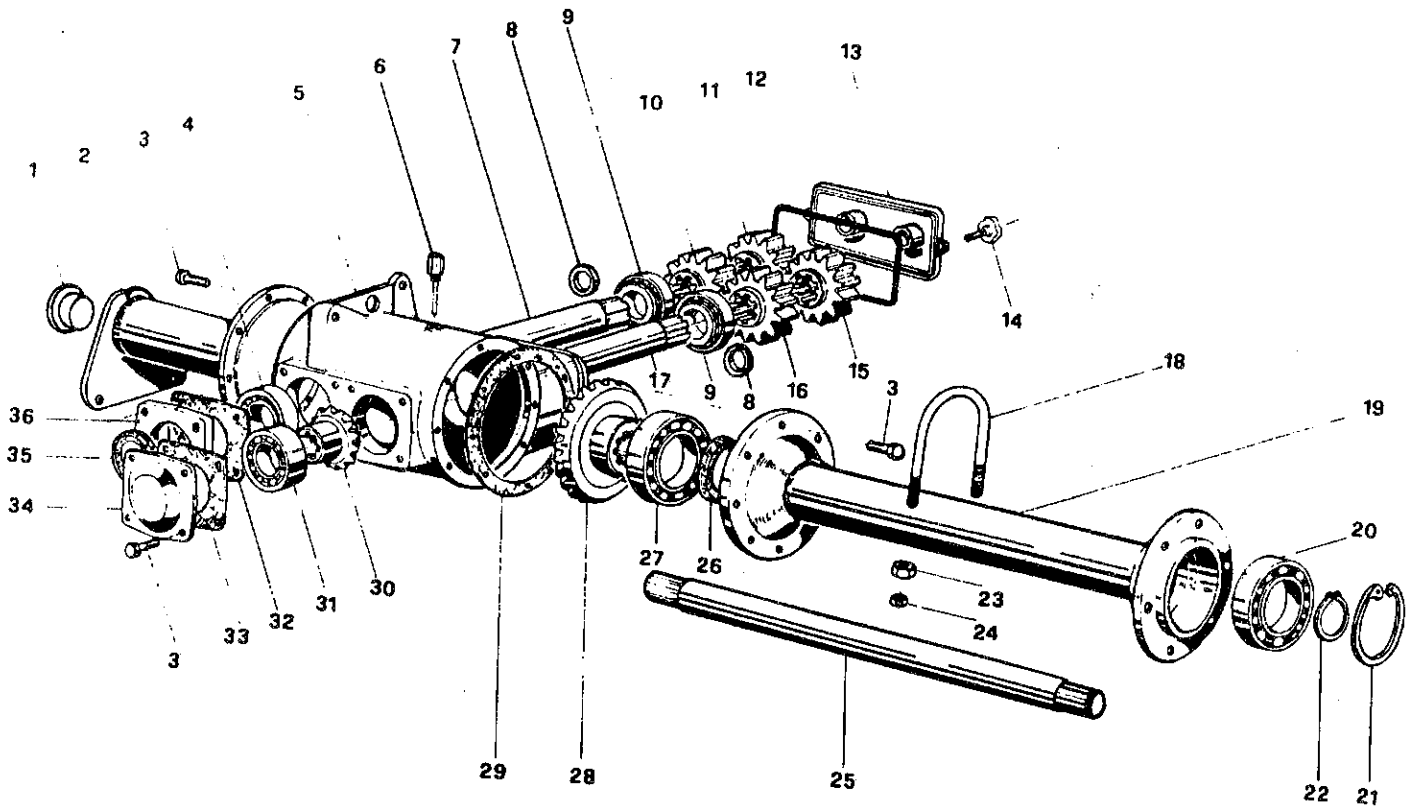
ITEM	PART #	DESCRIPTION	NO.
85	003 4159	SEAL-OIL 45.60.10	1
86	001 2149	BEARING 6208	1
87	003 7098	SAFETY NUT M35	1
88	013 7051	SKID RIGHT	1
89	003 0091	BEARING COVER-RIGHT	1
90	003 7012	RIGHT SIDE PANEL	1
91	000 7288S	*L-KNIFE RIGHT (OPTIONAL)	—
92	000 7288D	*L-KNIFE LEFT (OPTIONAL)	—
93	023 7081	ROTOR-358	1
	033 7081	ROTOR-366	1
	043 7081	ROTOR-374	1
	053 7081	ROTOR-382	1
94	003 8650	WHEEL COMPLETE	2
95	003 8661	WHEEL SUPPORT	2
96	001 5075	DUST COVER	2
97	002 5045	COTTER PIN	2
98	001 5073	BUSHING	4
99	003 8695	WHEEL	2
100	003 8671	WHEEL-SUPPORT FORK	2
101	003 7349	BOLT M14 X 45	2
102	003 8641	FRONT BAR-358	1
	013 8641	FRONT BAR-366	1
	023 8641	FRONT BAR-374	1
	033 8641	FRONT BAR-382	1
103	003 8635	FRONT BAR HITCH	2
104	003 8636	PLATE	2
105	002 6329	BOLT M10 X 45	4
106	003 6153	BOLT M14 X 70	1



**PARTS
ILLUSTRATION
MODEL NO.**

**ROTARY TILLER
GEARBOX
11-3XX-412**

**GR11
SR3
CAT. 56**





PARTS
LIST
MODEL NO.

4SR Gear Box
ROTARY TILLER
GEARBOX
11-3XX-412

GR11
SR3
CAT. 56

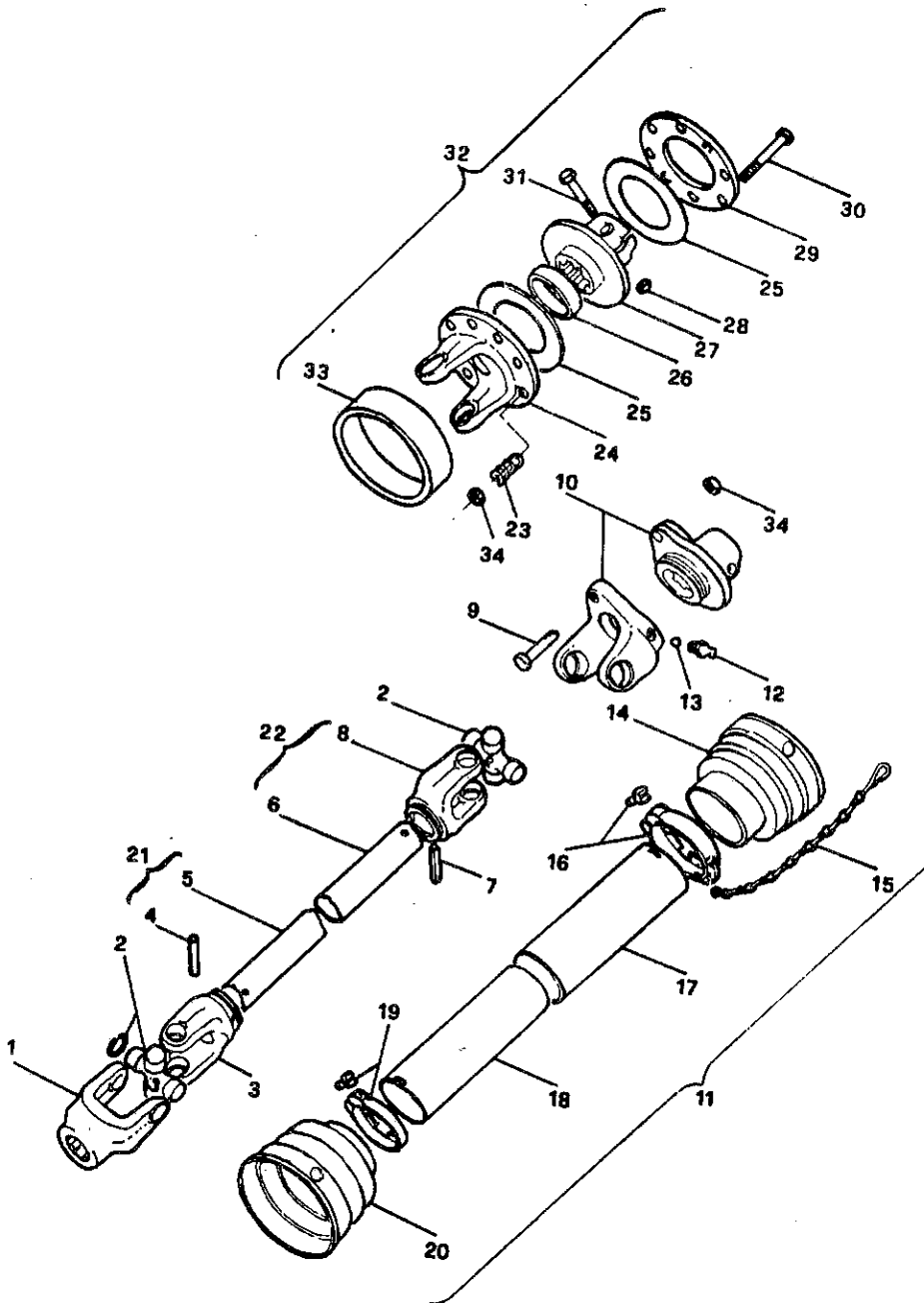
ITEM	PART #	DESCRIPTION	NO.
1	003 8586	PLASTIC PLUG	1
2	003 8581	GEARBOX SUPPORT	1
3	000 1241	BOLT M10 X 25	20
4	000 7172	BEARING 30207	1
5	003 8521	GEARBOX HOUSING	1
6	000 1158	OIL LEVEL PLUG	1
7	003 8552	SHAFT UPPER	1
8	003 3355	SPACER	2
9	003 3349	BEARING 32207	2
10	003 8563	GEAR Z15	1
11	003 3352	GEAR Z17	1
12	003 8572	GASKET	1
13	003 8571	REAR GEAR COVER	1
14	003 8575	KNOB PLASTIC	2
15	003 3354	GEAR Z19	1
16	003 3353	GEAR Z21	1
17	003 8558	SHAFT LOWER	1
18	003 8512	"U" BOLT	1
19	003 8506	DRIVE TUBE-358	1
	023 8506	DRIVE TUBE-366-374	1
	012 8506	DRIVE TUBE-382	1
20	000 1085	BEARING 6309	1
21	000 1087	SNAP RING M100 INNER	1
22	000 1114	SNAP RING M42 EXT.	1
23	001 3104	NUT M18	2
24	000 1226	NUT M14	2
25	003 8212	DRIVE SHAFT-358	1
	013 8212	DRIVE SHAFT-366-374	1
	023 8212	DRIVE SHAFT-382	1
26	000 1084	SEAL-OIL 55.72.10	1
27	000 7157	BEARING 6211	1
28	003 8225	BEVEL GEAR	1
29	003 8516	GASKET	1
30	003 8226	PINION GEAR	1
31	000 4539	BEARING 30210	1
32	003 3363	GASKET	1
33	003 8536	GASKET	1
34	003 8535	PINION COVER	1
35	000 2295	SEAL-OIL 35.62.10	1
36	003 3362	CLUTCH COVER	1
	050 0513	GEARBOX COMPLETE	



PARTS
ILLUSTRATION
MODEL NO.

ROTARY TILLER
PTO
11-3XX-412

GR11
SR3
CAT. 44





**PARTS
LIST
MODEL NO.**

**ROTARY TILLER
PTO
11-3XX-412**

**GR11
SR3
CAT. 44
*CAT. 46**

ITEM	PART #		DESCRIPTION	NO.
1	026 001E	948 514	YOKE TRACTOR END-1 $\frac{3}{8}$ "-6	1
2	016 004E	948 512	CROSS & BEARING 30.2 X 92	2
3	016 029E	948 511	YOKE—MALE	1
4	000 04E 017E	948 518	ROLL PIN M10 X 65 75	1
5	160 04E 109E	948 516	SHAFT-MALE	1
6	160 206E	948 517	SHAFT-FEMALE	1
7	000 016E	948 547	ROLL PIN M10 X 70	1
8	016 028E	948 510	YOKE—FEMALE	1
9	000 506E	948 550	BOLT M8 X 60	1
10	260 001E	948 513	YOKE—IMP. END 1 $\frac{3}{8}$ "-6	1
11	260 206E	940 519	SHIELD COMPLETE	1
12	000 021E	948 542	GREASE FITTING M10 X 1	1
13	000 023E	948 552	BALL BEARING	—
14	016 023E	948 520	GUARD CONE-OUTER	1
15	016 025E	948 536	SAFETY CHAIN	2
16	016 016E	948 521	LOCKING RING-OUTER	1
17	161 106E	948 522	TUBE-FEMALE	1
18	161 206E	948 523	TUBE-MALE	1
19	016 015E	948 524	LOCKING RING—INNER	1
20	016 022E	948 525	GUARD CONE-INNER	1
21	948 545B	948 545	SHAFT-MALE COMPLETE	1
22	948 546B	948 546	SHAFT-FEMALE COMPLETE	1
23	014 022E	948 528	SPRING	8
24	016 039E	948 529	YOKE	1
25	015 019E	948 530	FRICTION DISK	2
26	015 020E	948 531	SPACER	1
27	015 018E	948 532	BODY FRICTION CLUTCH-1 $\frac{3}{8}$ "-6	1
28	948 553B	948 553	NUT—SELF-LOCKING-M12	1
29	015 021E	948 533	OUTER FLANGE	1
30	000 501E	948 548	BOLT M10 X 80 NUT	8
31	000 502E	948 551	BOLT M12 X 65 NUT	1
32	261 001E	948 509	YOKE—COMP. SL. CLUTCH-1 $\frac{3}{8}$ "-6	1
33	015 022E	948 534	DIRT SHIELD	1
34	948 549E	948 549	NUT-SELF LOCKING M10	8
	948 402B	948 402	*SHEAR PIN PTO COM.-T60	—
	948 403B	948 403	*SLIP CLUTCH PTO - T60	—
	026 004E	001 423	PUSH PIN SET	2